

AKHLAK



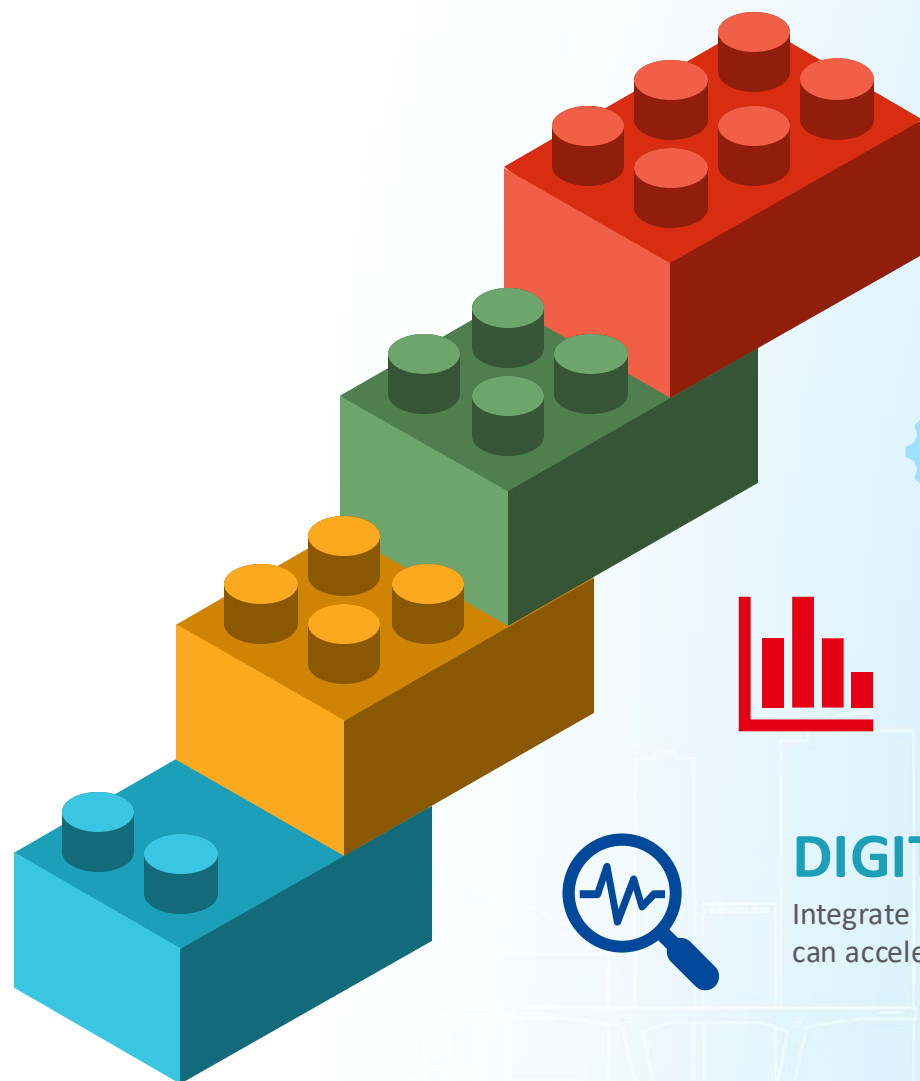
# Launching CMMS

## COMPUTERIZED MAINTENANCE MANAGEMENT SYSTEM

PT Wijaya Karya Beton Tbk



# Next Target



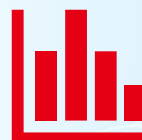
## IMPROVEMENT ROA

With increased asset utilization, smoother flow of products, information, and money, the company's ROA will improve.



## BUSINESS PROCESS OPTIMIZATION

With the smooth running of the three main streams, business process optimization will be achieved, including asset optimization.



## SMOOTH OPERATION OF THE THREE MAIN FLOWS

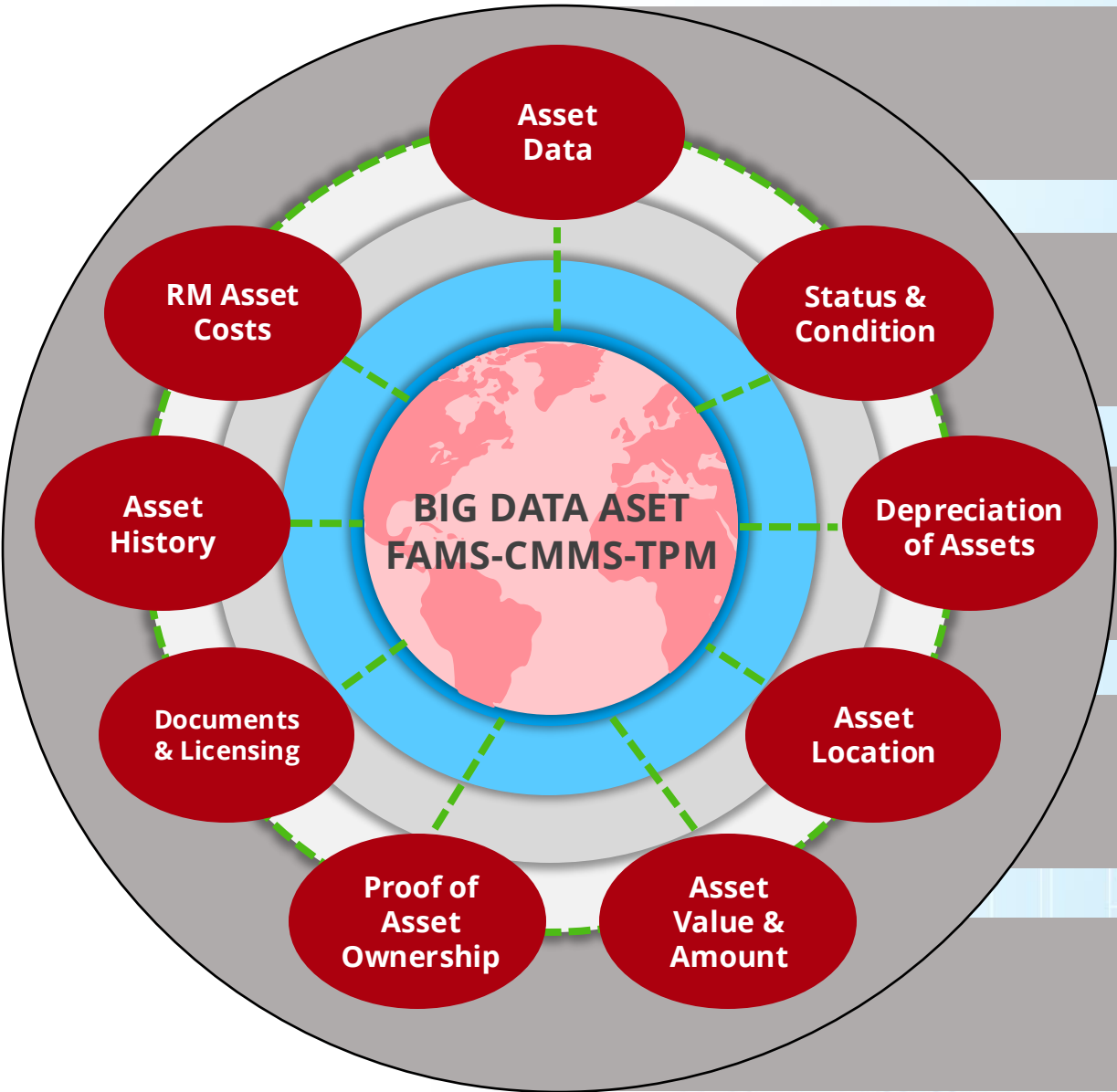
With the integration of all systems in the company, the flow of products, information, and money can run smoothly and evenly.



## DIGITALIZATION AND INTEGRATION

Integrate and digitize all business processes to obtain BIG DATA that can accelerate the evaluation and decision-making processes.





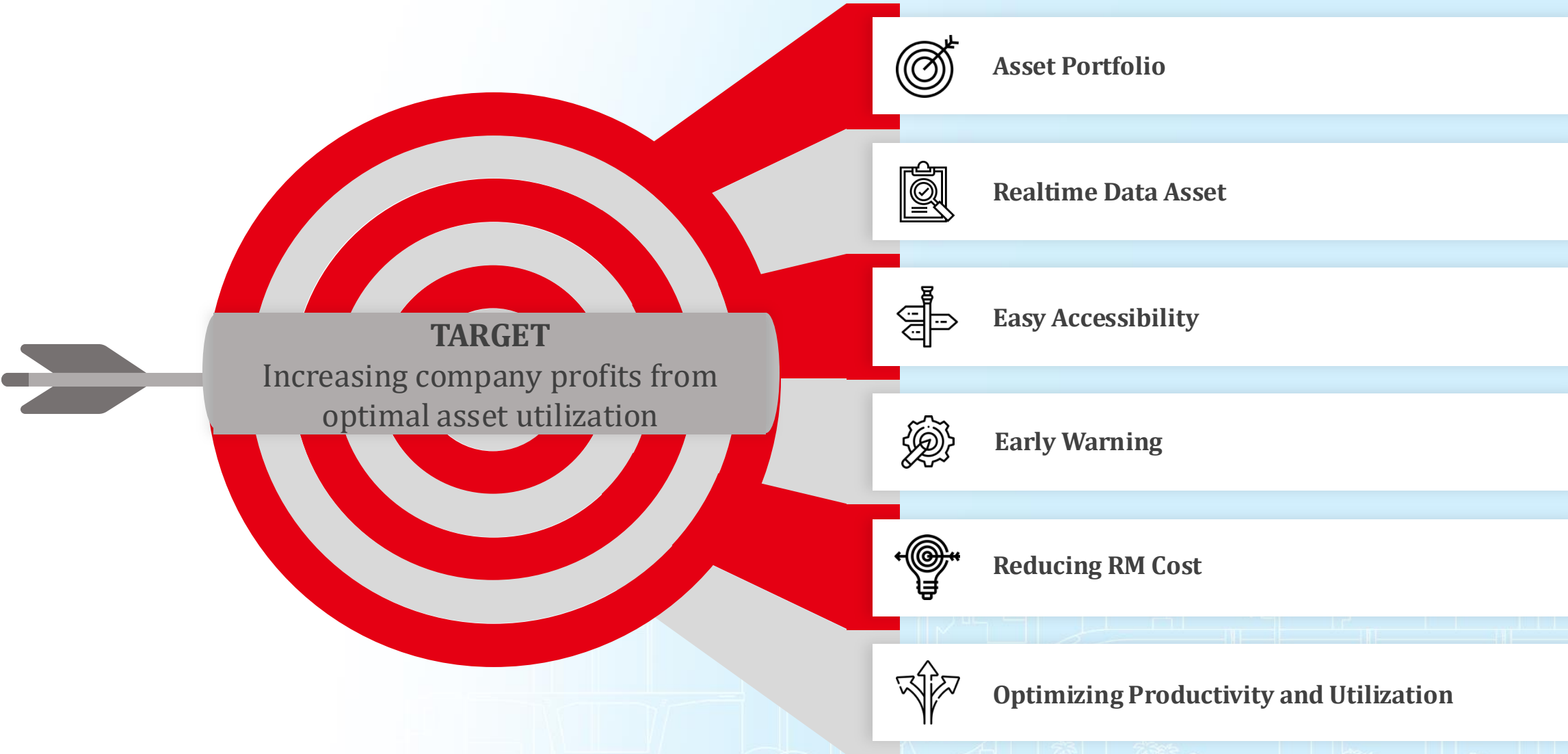
Integrated Data

Skill Improvement

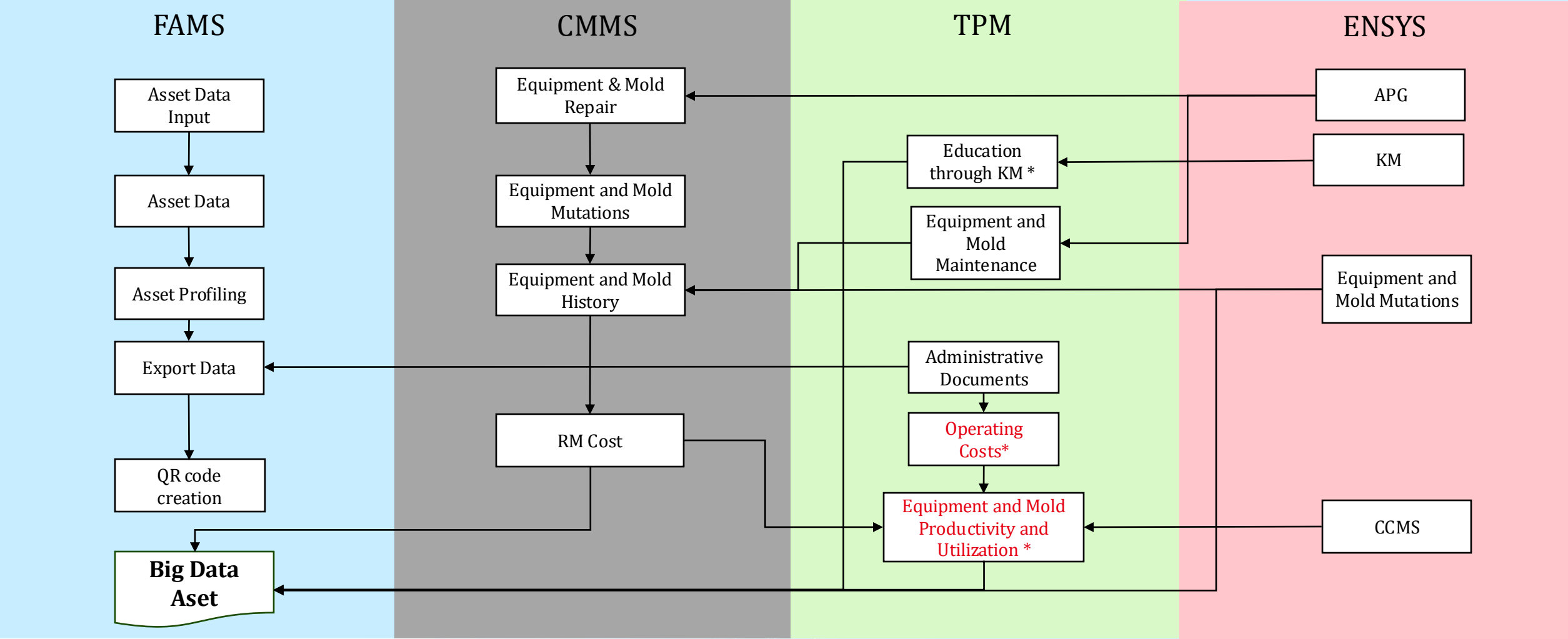
Employee Empowerment

Decision Making

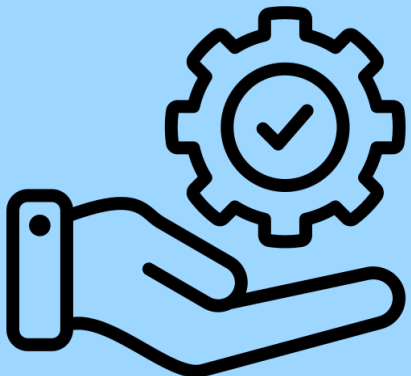
Asset Optimization



## Matrix



\* Next TPM Development



**2024**  
Asset Inventory

**Maret 2025**  
Fixed Asset Management  
System

**Juli 2025**  
Computerized Maintenance  
Management System

**Okt 2025**  
Total Productive Maintenance  
Tahap 1

**Juli 2026**  
Total Productive Maintenance  
Tahap 2





# Computerized Maintenance Management System (CMMS)

“**CMMS** is an advanced development of FAMS that focuses on equipment and mold assets to facilitate monitoring, evaluation, and updating of the condition of equipment and mold assets.”

## Bcakground



The amount of administration done manually



The difficulty of monitoring the status and condition of equipment and molds in real time



RM cost evaluation is still manual and difficult to trace

## Goals

1. Real-time **monitoring** of equipment and molds
2. **Controlling** maintenance and repair costs
3. **Evaluate** the status and condition of equipment and molds
4. **Digitization** to improve data accuracy and speed up reporting
5. Data **integration** from and to other ERPs

# Gap Analysis



AS IS	GAP ANALYSIS	STRATEGIC IDEA	TO BE
There are 13 procedural forms that must be completed, and the process is still manual.	<ul style="list-style-type: none"><li>Dilt takes a lot of time and effort to fill out the form</li><li>Low data accuracy</li></ul>	Digitization and integration of procedural documents through the CMMS system	<ul style="list-style-type: none"><li>All necessary forms are automatically filled out according to procedure</li><li>Document verification with a digital system</li><li>Documents can be accessed digitally</li></ul>
Asset data and history are still manual	<ul style="list-style-type: none"><li>Incomplete database of equipment and mold history</li><li>When equipment and molds are not transferred, it is necessary to start from scratch.</li></ul>	Real-time history and status of tools and molds based on ERP >> CCMS	<ul style="list-style-type: none"><li>The history and condition of tools and molds are automatically filled in when there are repairs or maintenance of tools and molds</li><li>The database is digital and integrated so that if there is a transfer, it automatically follows</li></ul>
Data on repair and maintenance costs for tools and molds is still difficult to trace and is still manual.	<ul style="list-style-type: none"><li>Manual cost recording</li><li>Difficulty integrating data</li><li>Low data accuracy</li><li>Data is difficult to trace</li></ul>	RM Cost Dashboard via digital platform >> CMMS	<ul style="list-style-type: none"><li>All repair and maintenance processes are carried out through an integrated digital system (CMMS) that is integrated with spare parts inventory.</li><li>Easy access to databases.</li><li>Verification of repair and maintenance documents with a digital system.</li><li>Documents can be accessed digitally.</li></ul>



# Thank You

For further information,  
please visit Our Official Website :

